



**GLOBAL PROJEKT
LOGISTIQUE**

**LOGISTICS IN
CHALLENGING MARKET**

Sure to Door®

RELIABLE • SAFE • EFFICIENT

Project Logistics • International Freight Forwarders • Integrated Logistics Solution Providers

Who **we** are

We are a young team of dedicated shipping professional who live & breathe the shipping business.

Our performance is based on a deep understanding on industrial products and work flows, providing out of box solutions based on knowledge skills.

We provide customised solutions with an eye for detailed execution, giving dry run on documentation or shipment layout. Our emphasis is on long term relationships with our partners and stake holder. We value and respect cargo however Big or Small, with the same dedication.

What we believe in



Reliability

Reliability is based out of knowledge and experience over years of shipping into both established and emerging markets. Reliability also comes out of **association with Key Partners who have the same believe on deliverables and accountability.**



Safety

Safety of cargo comes first irrespective of the size and value, because of our respect towards deliverables in terms of time, resources and future repeat order- **We optimize shipping logistics mode & options with no compromise on security.**



Efficiency

Efficiency emerges out of everyday processes from the time of hand holding in to tender bids, to execution of cargo with both pre & post shipment procedures. **Efficiency is based on "Kaizen - doing it right the first time."**

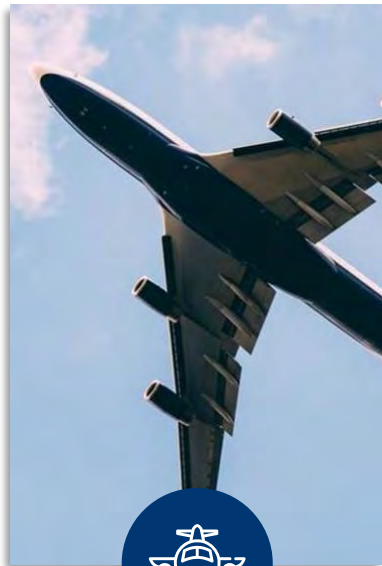
Accreditations



Memberships



Product Portfolio



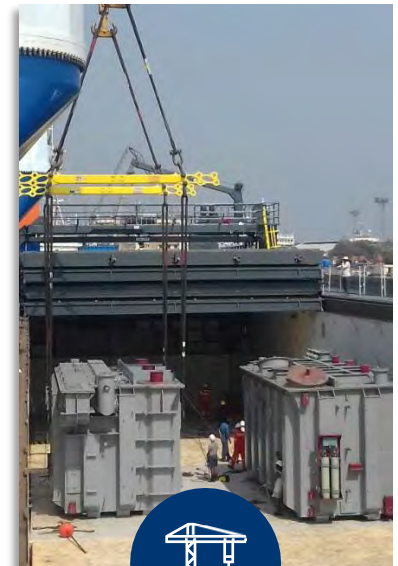
Air Cargo



Sea Cargo



Warehousing



Heavy Lift Project

Global Projekt Logistique offers an array of services into core activities like shipping worldwide through AIR & SEA. Custom broker services over the world through our trusted and renowned partners specially dealing for “Door to Door” delivery in Africa, for Heavy Lift Projects, Chartering, Break Bulk & Super OOG handling, on demand Warehousing along with correct consulting for procedures of documentation - Pre & Post shipments.

Industry Expertise



Pharmaceutical



Electrification Projects



Sugar Plants



Cement plants



Transmission & Distribution



Institutional Books



Trafos



Pressure vessels / boilers

VESSEL CHARTERING

Global Shipping Services sourced a part charter vessel to meet our urgent schedules and delivery schedule under an L/C a happy customer for all your Full and Part Charter needs, contact the experts at GPL



Transmission
&
Distribution



PROJECT MANAGEMENT

Global Projekt has full professional expertise for your end to end logistics and project management need. Expert solutions on 3PL & 4PL activities for you supply chain movement.

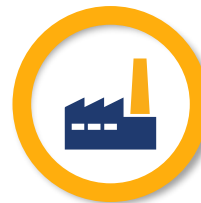


Electrification
Projects



HEAVY HAUL LOGISTICS

Global Projekt take care of your heavy cargo effectively. Having an solution base service, we understand the science behind the Heavy logistics stating "Don't worry be heavy"



Sugar Plants



BREAK BULK SERVICES

At Global, we understand the need of customer and offer them not only conventional BB service, but BB loading on containerized vessel to keep a check on logistics cost.



Cement Plant
Projects



OVERSIZED CONTAINERS & SPECIAL EQUIPMENTS

Experts in OOG Flat racks, Open tops, platforms for fast and reliable ocean freight service when BB isn't acceptable. Including pick up, load block and bracing, NCB inspections."



Pressure Vessel
Projects



International Freight Forwarding

Air Cargo

- Digital & global air logistics services
- Covering the world with partner network
- Complicated & DG air export & import clearance
- Partnership with core carriers



Sea Cargo

- Digital freight management
- Specialise in critical & complicated shipment
- Complete & correct shipping procedure



Warehousing & Custom Broker

- Digital wms pan india on demand
- Digital document management
- Transparent & fast custom broking services

Trucking Services

- Digital freight booking
- Live tracking & updates
- Partner with prominent asset owners in india



Fire Engine Truck from Nhava Sheva to Africa



Oil drums & accessories from Mumbai to Africa



Proper Lashing & choking before exports from India



Earth Moving Machinery from Southern part of India



Oversize machinery, exported after proper port operations.



Routine survey of cargo loading before exports.

We offer cargo clearing services through registered cleaning agents and specialists in border clearance services, in all transit and destination countries.

We perform full fleet management, route planning, time frames coordination, and constant tracking & reporting to our clients with unlimited client access to cargo movement.



Our Specialisation in African routes has enabled us to offer reliable transportation, distribution and clearance services at most competitive tariffs.

- Specialists in cross-border transportation to SADC countries & all locations further north on the African continent
- Close knowledge of African transportation conditions and challenges



- Covering all Africa with wide range of partners, who are committed to deliver



GLOBAL PROJEKT
LOGISTIQUE

PROJECT & HEAVY LOGISTICS

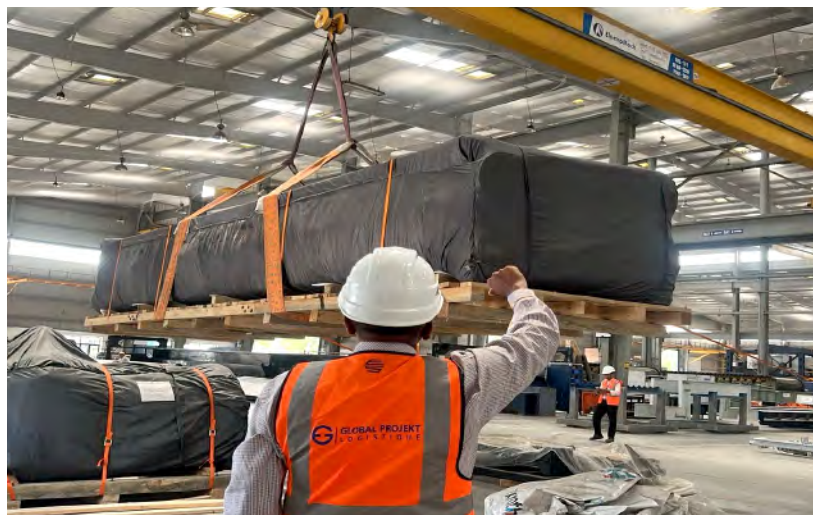
HEAVY RORO BIG
BULKER BULK HOOK
JUMBO UNDER
FORWARDING CHARTER LARGE



Balancing act of Cargo Safety & Timeline Deliveries

www.gprolog.com

Shipment from India to Peru



Gprolog executed a cargo comprising of special equipments and OOG pieces ex works Haryana to Callao Peru which were shipped in 3 lots
20 x 40 FR + 13 x 40 HQ + 3 x 40 FB + 5 x 20 FR + 3 x 40 OT + 1 x 40 FR (OW) + 2 x 40 FR OWOH + 1 x 40 FR OH
We had to prepare the loading plan for the OOG pieces of 41 mt weight besides the timely transportation, lashing / choking, movement to port.



We specialise in handling solar H beam structures from ex works to port handling at Kandla & Mumbai, part charter vessel and DAP/ DDP deliveries to various job sites across the globe.

Till date we have successfully handled approx 128000 mt of cargoes. We specialise in sequence loading at both load & destination ports.



Successful execution of a Break Bulk project by Gprolog, at kandla port for the cargo to Houston.

27.2 x 3.8 x 3.95 (L x W x H) in Meters-60 MT
25.1 x 5 x 4.8 (L x W x H) in Meters-78 MT
28.5 x 4.5 x 4.7 (L x W x H) in Meters-75.5 MT
19.9 x 3.4 x 3.5 (L x W x H) in Meters-44.5 MT
19.5 x 3.05 x 3.2 (L x W x H) in Meters-35.3 MT
18.7 x 2.45 x 2.7 (L x W x H) in Meters-24.8 MT

**2600 CBM of cargo moved on Ex Works basis
Total 40 Packages of various size and weight.**





|| Cargo handling at Mumbai port for Solar project

|| Vessel Loading operations at Kandla Port.



|| Handling of 800 MT pipes from China to India, which includes custom clearance and port handling of these pipes.



|| Handling & execution of 20 x 40 Ft Maffi in a single vessel for Veracruz which includes ex works and port handling along with forwarding.



Ex Works handling of 60 x 20 GP containers in a month for exports to middle east.



Cargo Inspection and palletization done at Ennore port just before the loading.



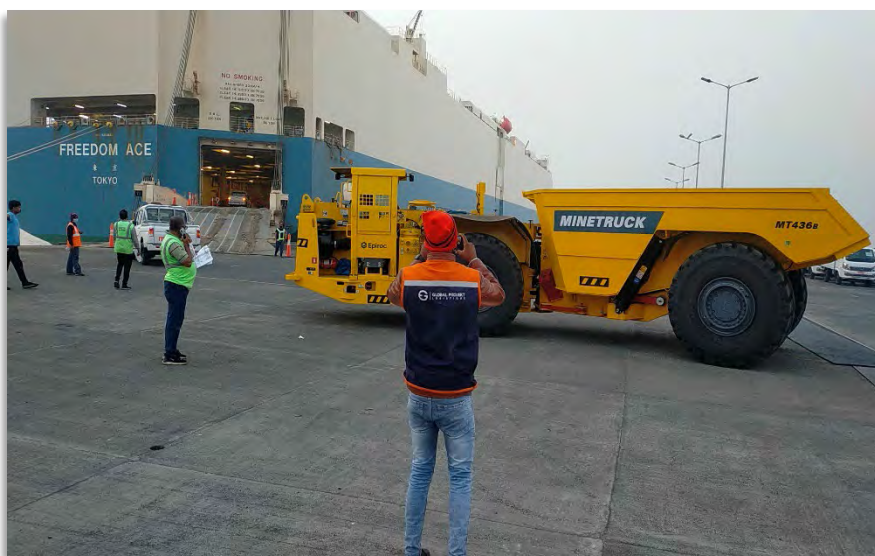
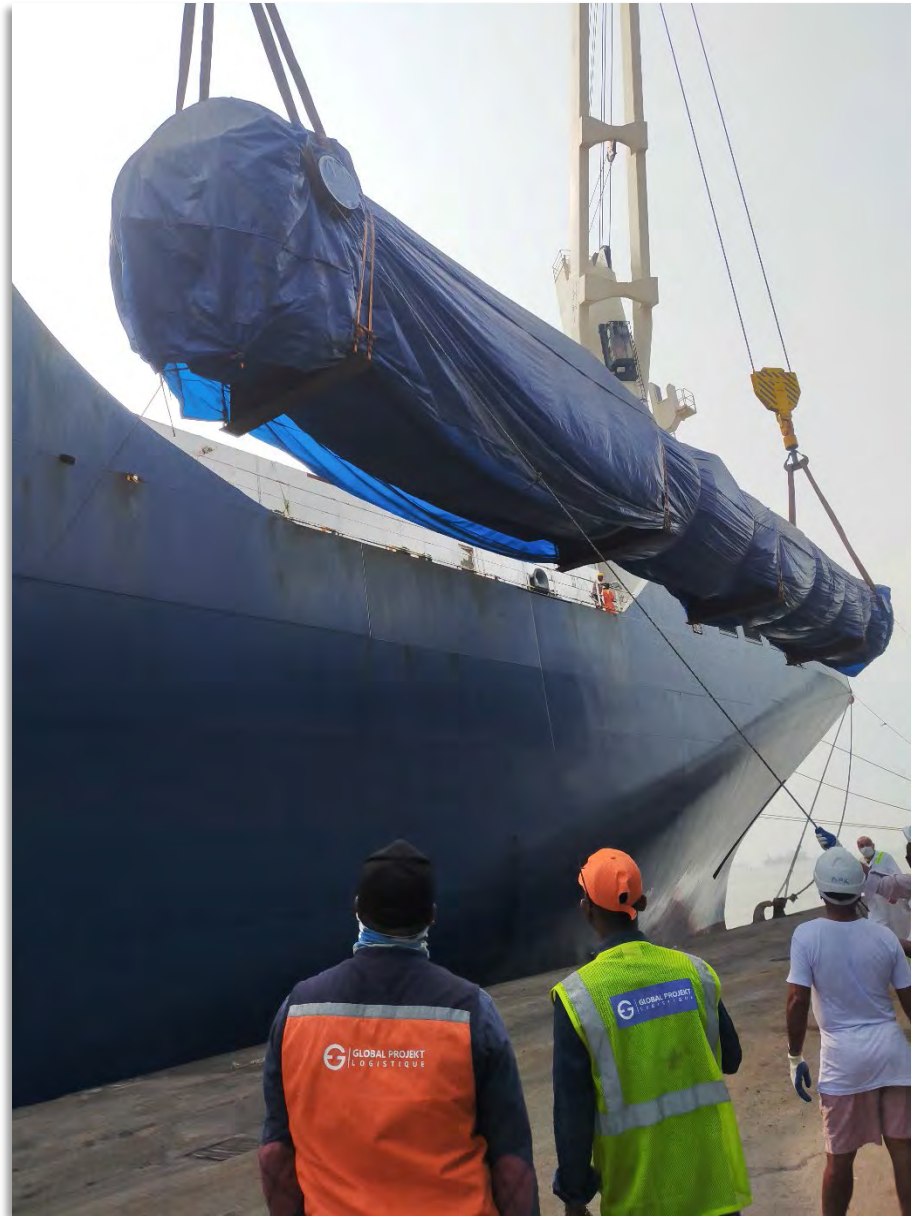
Maffi loading of boilers at Mumbai port for Colombia Exports.



Turbine machinery Exported on RORO vessel for exports



Routine survey of cargo at factory in South India before last minute exports to Africa.

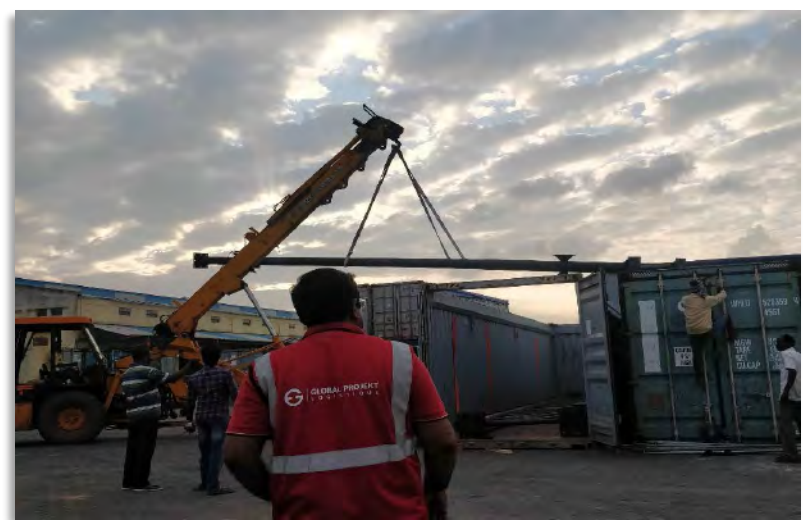
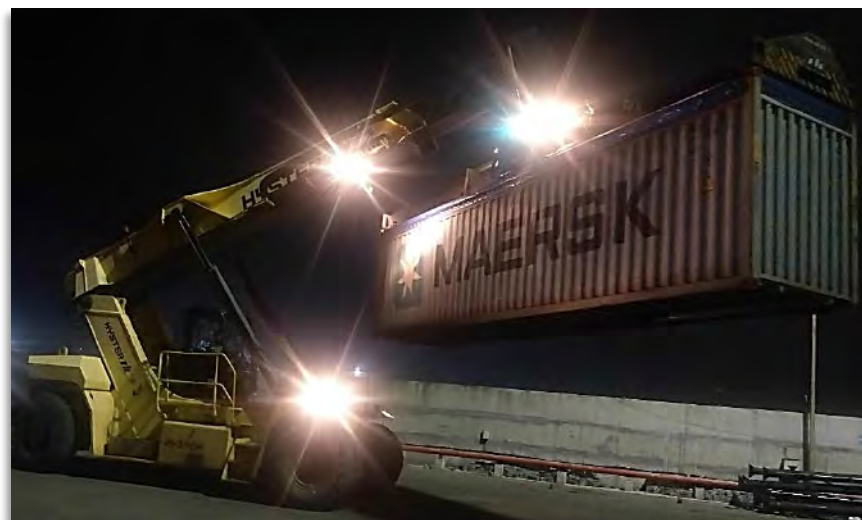


Recent Cargo Handled



Delivery of these Super ODC cargo with a gigantic height of 5 & 5.1 Meters to Malaysia and other South East Asia countries, we at Global Projekt Logistique have made sure of smooth delivery at the time of monsoons in India.

Roof top Stadium Project for Africa



A full project management job to Gprolog, which requires tight project operation right from the loading point at factory to the cargo stuffing at CFS and then on time loading of all the ODC containers for time defined delivery for erection of a roof top project at Nigeria .

30 x 40 FR OOG + 25 x 40 OT(IG) , almost 2600 CBM of cargo moved on Ex Works basis from India.



Gprolog recently handled 17 modules with length exceeding 11.5 mtrs, height 3.5 mtrs ex Mangalore port to job site in Michigan, USA via Baltimore port.

It was the first breakbulk shipment to be handled from Mangalore port on a container vessel which required operational planning with NMPT, JSW terminal, shipping line, stevedores and our port operations team.



Transformer and accessories were handled by Global Projekt Logistique for various destination from India. It contribute to various types for transformers varying from 40 MVA to 165 MVA and its accessories (OIL Drums & Radiators). Global Projekt Logistique is using various solution mode like using conventional Break bulk mode or loading as Break bulk on container vessel.

Suprottim Majumdar

Commercial Head

✉ s.majumdar@gprolog.com

☎ +91-8375033525 / +91-9810107304



Pradeepan Nadoran

Port Operations

✉ pradeepan@gprolog.com

☎ +91-8448089841



Manish Singh

General Forwarding & Air Freight,
DG - IATA Certified

✉ manish@gprolog.com

☎ +91-9871296320



Rupali Pawar

Pricing and Inside Sales

✉ rupali@gprolog.com

☎ +91-7208644884



Mahesh G

Documentation in charge

✉ mahesh@gprolog.com

☎ +91-8448089842



Key Contacts

Rupal Naik

Airfreight

✉ rupal.naik@gprolog.com

☎ +91-8879516427



Swapnali Kotkar

Accounts & Admin

✉ swapnali@gprolog.com

☎ +91-8779810902



Vinayak Sawant

Port Operations

✉ vinayak@gprolog.com

☎ +91-8448089838



Gnanasekar

South Region Shipping Co Ordinator

✉ gnanasekar@gprolog.com

☎ +91-8838598900



Kanchan Kr Dubey

Corporate Finance

✉ kanchan@gprolog.com

☎ +91-8448089839



GLOBAL PROJEKT LOGISTIQUE PVT. LTD

Sure to Door®

CORPORATE OFFICE (Mumbai):

Global Projekt Logistique Pvt. Ltd.
607-608 Sagartech Plaza "A Wing"
Sakinaka, Andheri Kurla Road,
Andheri East, Mumbai - 400072
Tel: +91-22-48255051 / 52 / 53 / 54

COMMERCIAL OFFICE (Gurugram):

Global Projekt Logistique Pvt. Ltd.
Vatika Triangle, Sushant Lok
Phase -1, MG Road
Gurugram, Haryana - 122002
Tel: +91-8448089835 / 36
+91-124-4418650

COMMERCIAL OFFICE (Chennai):

Global Projekt Logistique Pvt. Ltd.
Vatika Business Centres
Prestige Polygon, 3rd Floor
471 Anna Salai, Teynampet
Mount Road, Chennai - 600018
Tel: +91-44-40282512 / 6382760916